

Nuffield  
Family Justice  
Observatory

# Research using family justice data in SAIL

---

## User Journey

---

Family Justice Data Partnership (FJDP)  
Projects

Population Data Science  
at Swansea University

cfj Centre for  
Child & Family  
Justice Research

 SAIL DATABANK

Lancaster  
University 

# Start here

## Develop study protocol

If you wish to access Cafcass or related family justice data sources in the Secure Anonymised Information Linkage (SAIL) Databank.

## Would you like to be supported by the FJDP?



### Supported FJDP

- Full dataset documentation and wiki\*.
- Fully curated Cafcass data.
- Direct support from a member of the FJDP team or a member of the SAIL team.

### Lite touch FJDP

- Full dataset documentation and wiki\*.
- Support from a member of the SAIL team.

### No FJDP Involvement

- Basic dataset documentation°.
- Standard support from SAIL team.

## Contact us

Contact the FJDP team to discuss your project. [fjdp@swansea.ac.uk](mailto:fjdp@swansea.ac.uk)

## Project scoping

You will discuss the project idea, viability, timescales, resource usage and costs with the SAIL team. The FJDP team member at Swansea will advise SAIL.

## Study funding application

Only if external funding is required by applicant. This needs to incorporate SAIL costs.

## Data preparation

The SAIL team will prepare and provision the data for you so that it is available for your research.

## Data negotiation

SAIL will negotiate on your behalf to obtain data from the data custodian. The data custodians may set restrictions or make additional requests to make sure the data collections remain safe. Time scales will vary between data custodians.

## Accreditation training

Once your IGRP application has been accepted, all researchers involved in the project will need to undertake Safe Researcher training (MRC's 'Research, GDPR and Confidentiality' course or the 'Safe User of Research Data Environments' training course).

## Accepted

**Required amendments**  
Please work with SAIL or the FJDP team to revise your application.



**Rejected**  
Please work with SAIL or the FJDP team to revise your application.



## IGRP group

The independent IGRP group will check your project application against a number of criteria, and decide whether or not the research application will progress. They can decide to accept, postpone the decision pending further information, or reject your research application.

## Developing SAIL access application

You will then complete and submit an application to the SAIL Databank which will be considered by the Information Governance Review Panel (IGRP). This panel reviews proposals to ensure they comply with Information Governance principles and represent an appropriate use of data in the public interest. The IGRP includes representatives of professional and regulatory bodies, data providers including those from the NHS and the general public. The proposal provides the IGRP with a detailed outline of the aims of the project, data to be used, analysis and dissemination plans.

## Data support

The level of available support will depend on the classification of your project and your requirements. Project classifications are 'Supported FJDP', 'Lite Touch FJDP', or 'No FJDP Involvement.'

## Starting your research

You can now carry out your research according to the terms and conditions set by SAIL and the data custodians via the SAIL Gateway. The level of available support will depend on the classification of your project.

### Supported FJDP

You will receive support from the FJDP team if a researcher was named in your application.

### Other classifications

Support via SAIL as agreed at the project scoping stage.

## Output approval

Mandatory statistical disclosure checks will be undertaken on products of data analyses (such as tables, graphs and other statistical outputs) to safeguard data security. Disclosure controls process can take up to 48 hours.

## Acknowledgements

For all classifications please include the standard SAIL and data owner acknowledgements as detailed in the IGRP acceptance. If you are part of a Supported or Lite-touch FJDP please also acknowledge the NFJO and the FJDP. A document outlining the authorship policy is available on request from [fjdp@swansea.ac.uk](mailto:fjdp@swansea.ac.uk)

## Pre-publication

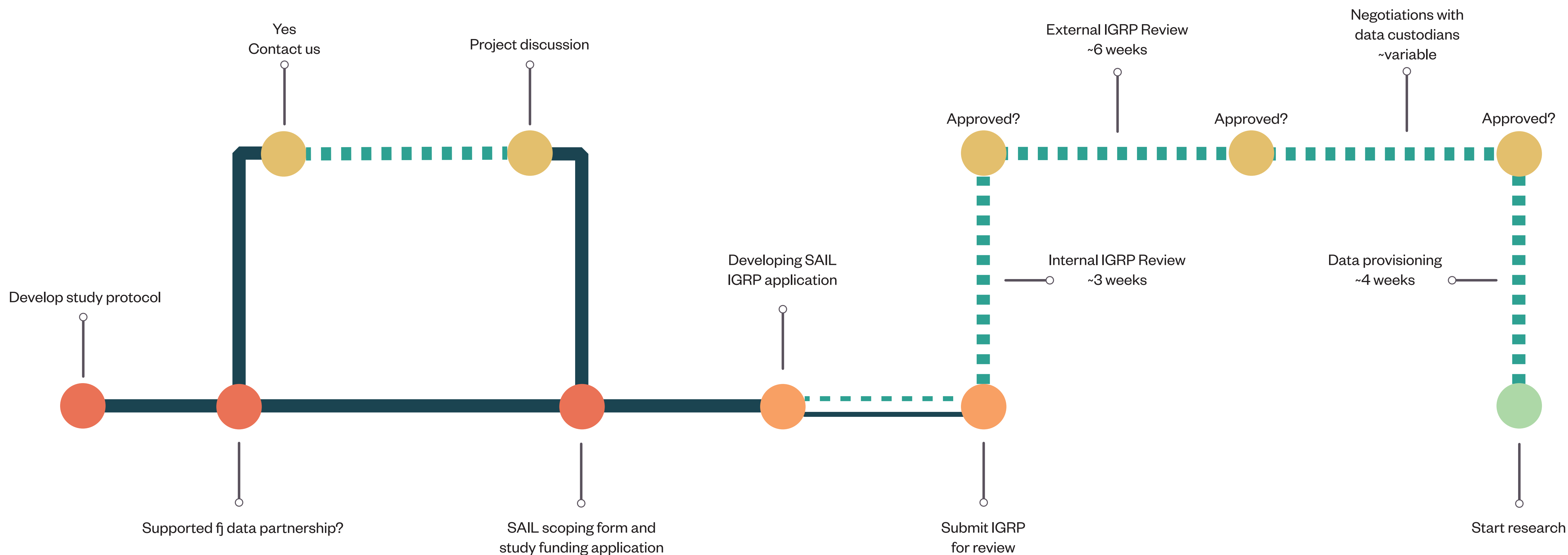
For all projects please refer to any conditions applied by SAIL prior to project approval. For Supported FJDP projects please circulate a copy of your research outputs to Lucy Griffiths at [fjdp@swansea.ac.uk](mailto:fjdp@swansea.ac.uk)

\* This documentation includes an extensive wiki detailing all useful information about the data.

° This is standard metadata information and schemas.

Researcher / applicant led timeline

SAIL IGRP timeline, ~16 weeks



Applicant time / action

SAIL time / action